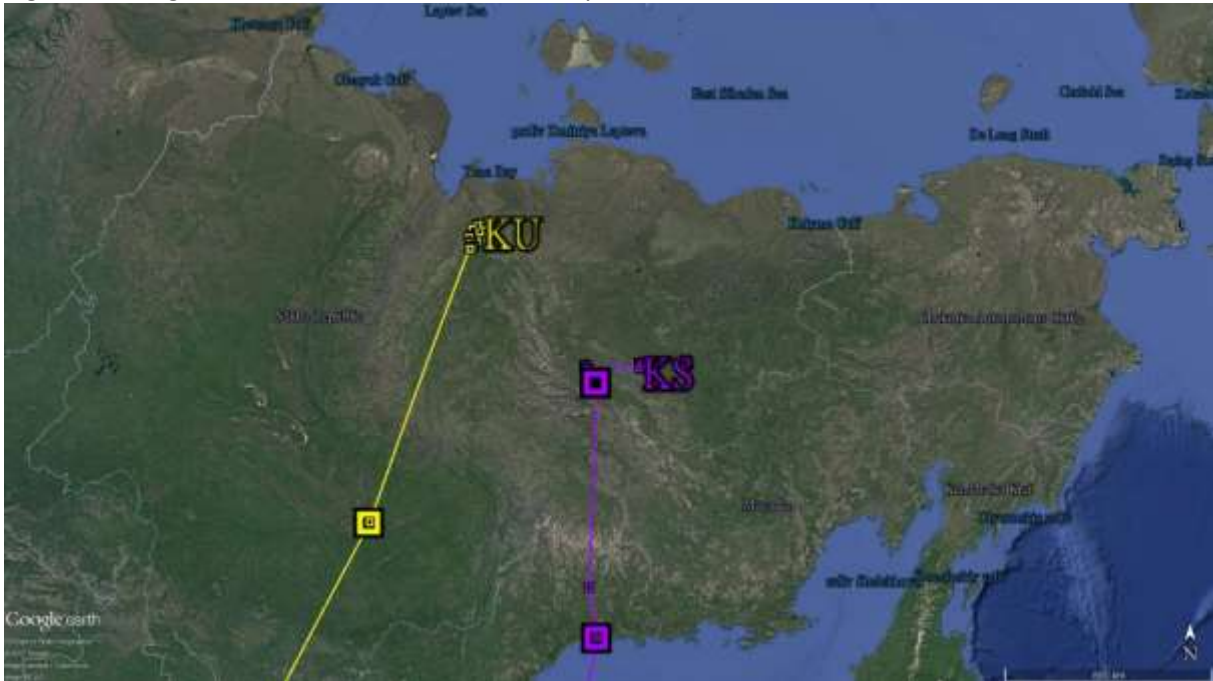


Busy breeding

It has been quite a while since our last updates and we are delighted to see that both KS and KU have reached their breeding sites!

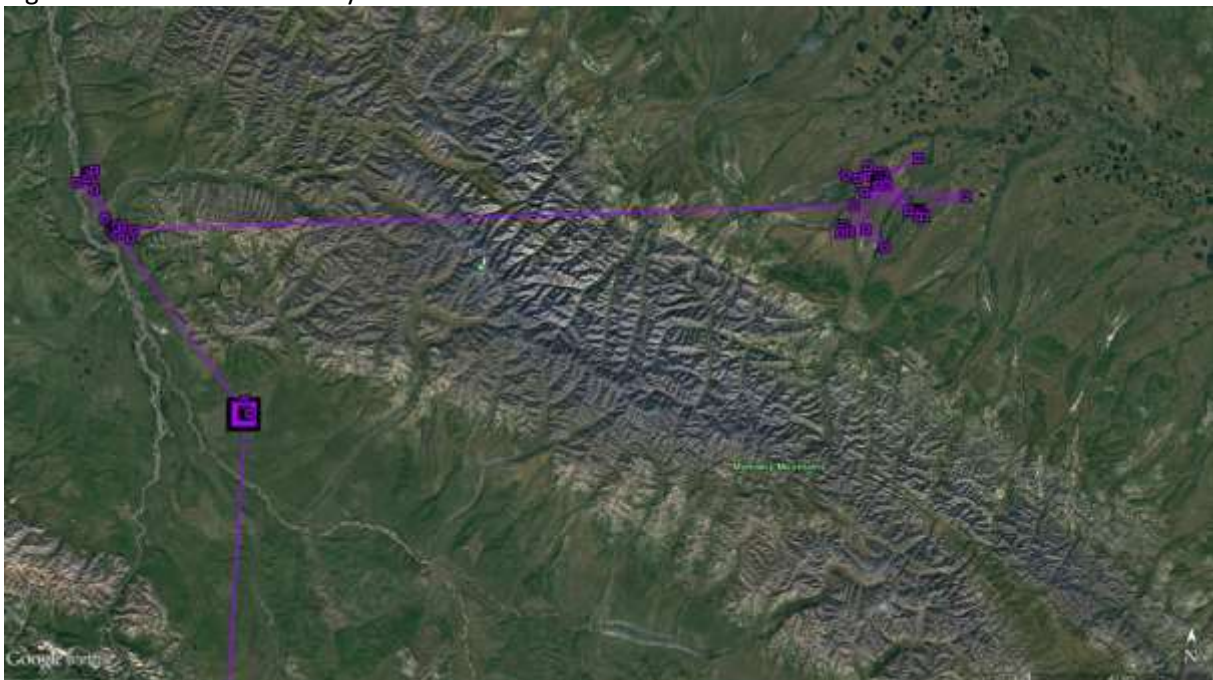
KS and KU have chosen different area to nest and their nesting area are approximately 630km apart from each other in the Sakha Republic, Russia.

Fig 1. Breeding location of KS and KU in Sakha Republic, Russia



KS reached the west of Momskiy Mountains in the last week of May. After spending two days there to replenish, it flew 157km east across the 2000m mountains to reach its nesting location.

Fig 2. KS flew across Momskiy Mountains



Within a few days after arrival, KS has decided its nesting area. The movement of KS in its first week of arrival was quite extensive, covering up to an area of 500km². Moving on to the second week, movement significantly shrunk to less than 100km². Movement further limited to a 5km x 5km area in the third week indicating that KS is highly likely nesting.

Fig 3. Movement of KS around nesting location:

Fig 3. Movement of KS around nesting location - Week 1: 30-May to 5-Jun



Fig 3. Movement of KS around nesting location:Week 2: 6-Jun to 12-Jun

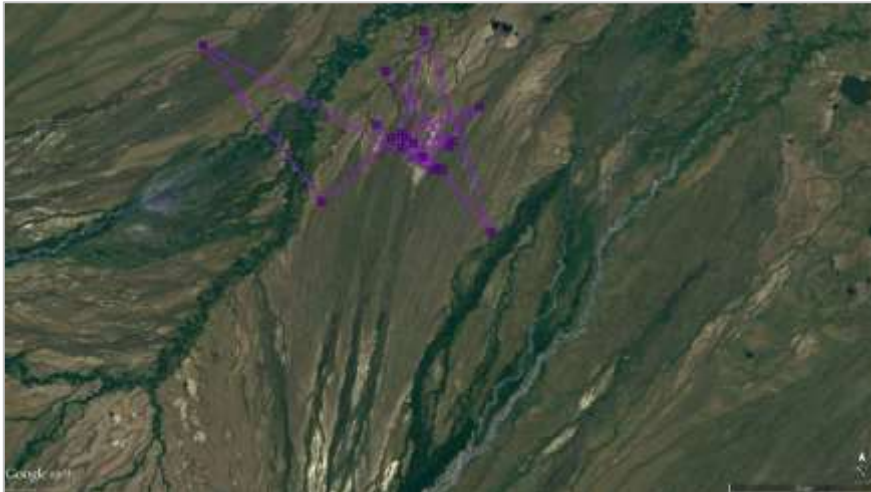
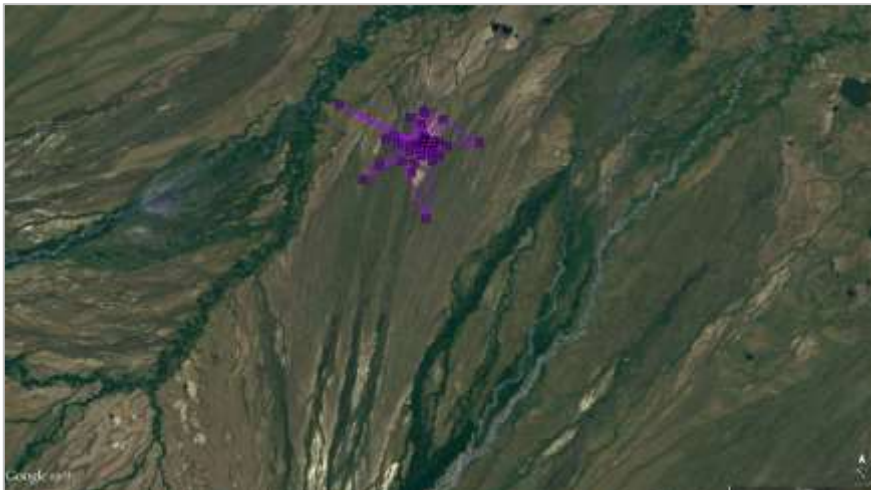
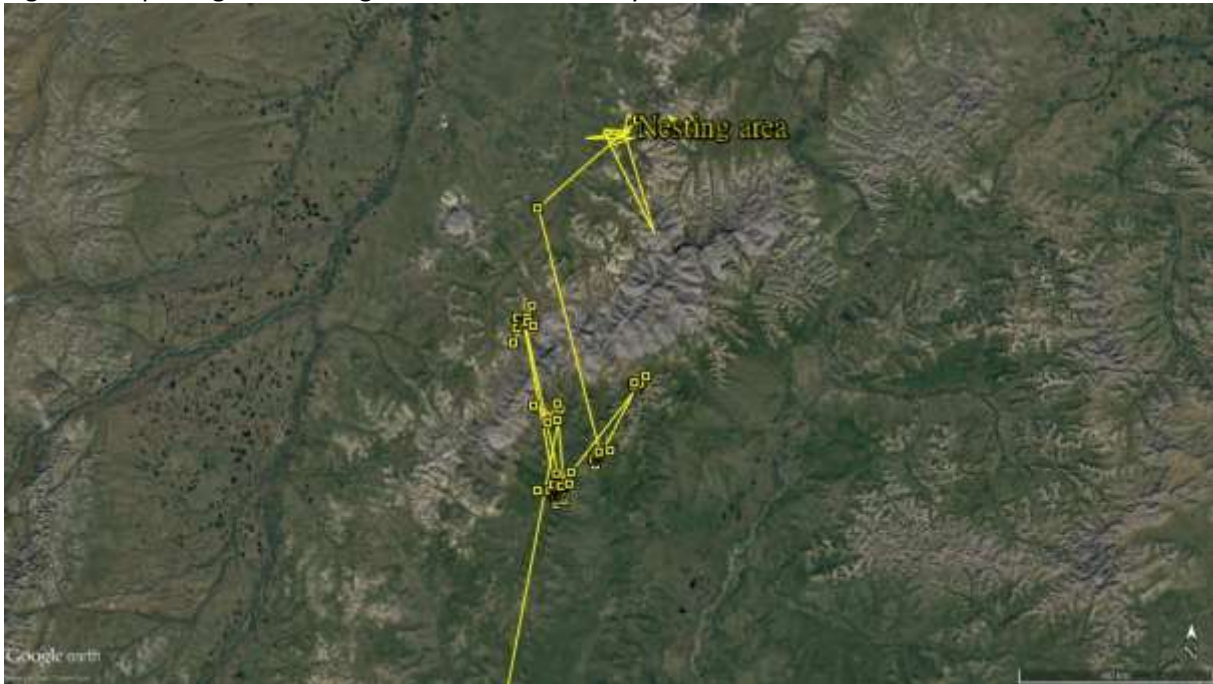


Fig 3. Movement of KS around nesting location:Week 3: 13-Jun to 19-Jun



KU also arrived at its potential breeding area in late May. However, it then spent over 1.5 weeks exploring the area on both sides of a mountain before it finally decided its nesting area 17km north of the mountain, 27km west to River Yana.

Fig. 4 KU exploring its breeding area between 25-May and 5-Jun



Also within a week after arrival, a significant change in area of movement is observed. In the first week, KU moved in a wider area of up to 520km². Afterwards, it settled down in the second week within a 13km x 10km area.

Fig 5. Movement of KU around nesting location-

Fig 5a. Movement of KU around nesting location - Week 1: 7-Jun to 13-Jun



Fig 5b. Movement of KU around nesting location - Week 2: 14-Jun to 19-Jun



In the coming weeks, both KS and KU will be busy nesting and incubating their eggs. Later on their movement pattern might change again indicating fledging of their youngs.

On top of KS and KU which successfully made their journey to the breeding ground, we still regularly receive signals from both LA (at Eighty Mile Beach) and JX (at Palawan, the Philippines).

As of 20 June 2017:

Migration tracks of our Whimbrels:



Migration summary on our Whimbrels

Leg Flag (track colour)	No. of days since deployment	No. of days since migration started	Distance travelled
LA (blue)	128 days	0 days	0km
KS (purple)	116 days	65 days	10,412km
KU (yellow)	116 days	64 days	9,904km
JX (pink)	87 days	61 days	3,049km

Katherine Leung
20 June 2017