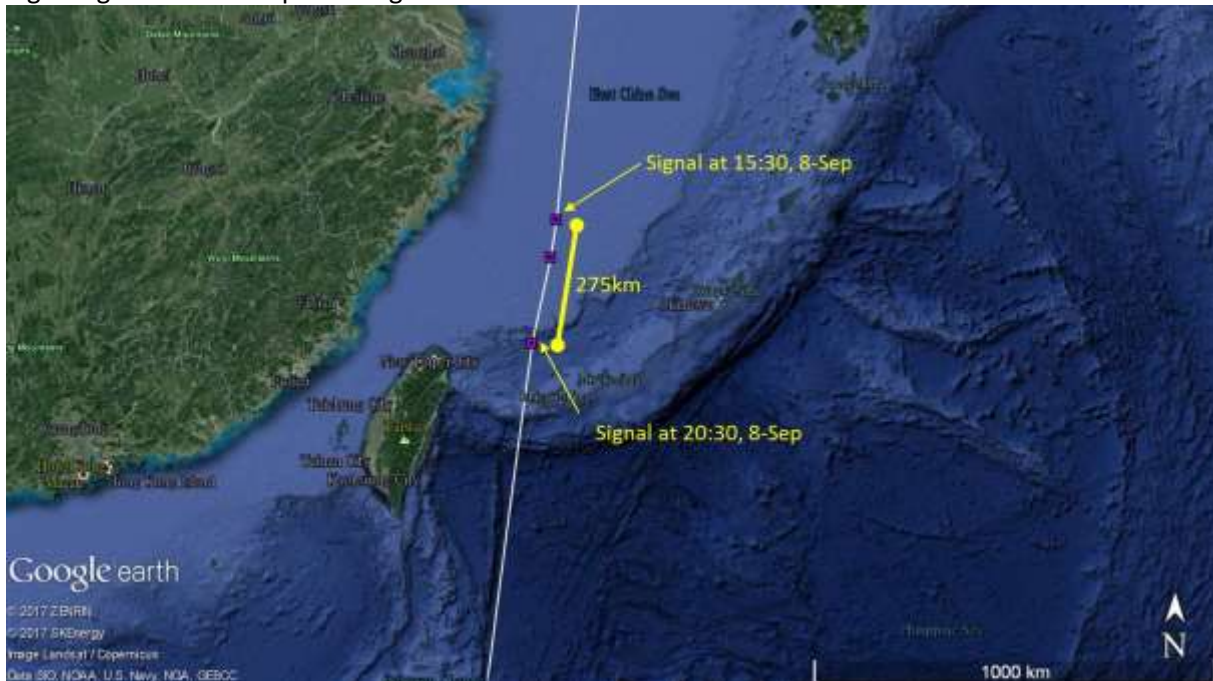


Long-haul flight home

One of our Whimbrel from the breeding ground is on its way back home! After staying and replenishing at North Korea for 23 days, KS made its move on 6-Sep evening.

KS has flown 3,671km non-stop for 4 days already and is currently located between Borneo and the Philippines. With the aid of southerly wind, KS flies home with an average speed of 38km/h. Base on satellite signals on 8-Sep, it has even flew at a speed of 55km/h for 5 hours!

Fig 1: Signals from 8-Sep showing KS covered a distance of 275km within 5 hours



KS is currently about 2,500km away from Broome. If it continues to fly without stopping, it is expected to be home within 3 days time.

Meanwhile, KU is spending its 35th day at Yingkou, Liaoning Province. We are expecting it to start migrating south very soon like KS. We are still receiving regular signals from JX and LA from Broome and Eighty Mile Beach.

Another update will be sent out as soon as KS reaches home.

As of 10 September 2017:

Migration tracks of our Whimbrels:



Migration summary on our Whimbrels

Leg Flag (track colour: N - S)	No. of days since deployment	No. of days since departing Australia	Distance travelled
LA (blue)	210 days	0 days	0 km
KS (purple - white)	198 days	147 days	18,091 km
KU (yellow - orange)	198 days	146 days	13,276 km
JX (pink - green)	169 days	143 days	6,124 km

Katherine Leung
10 September 2017