

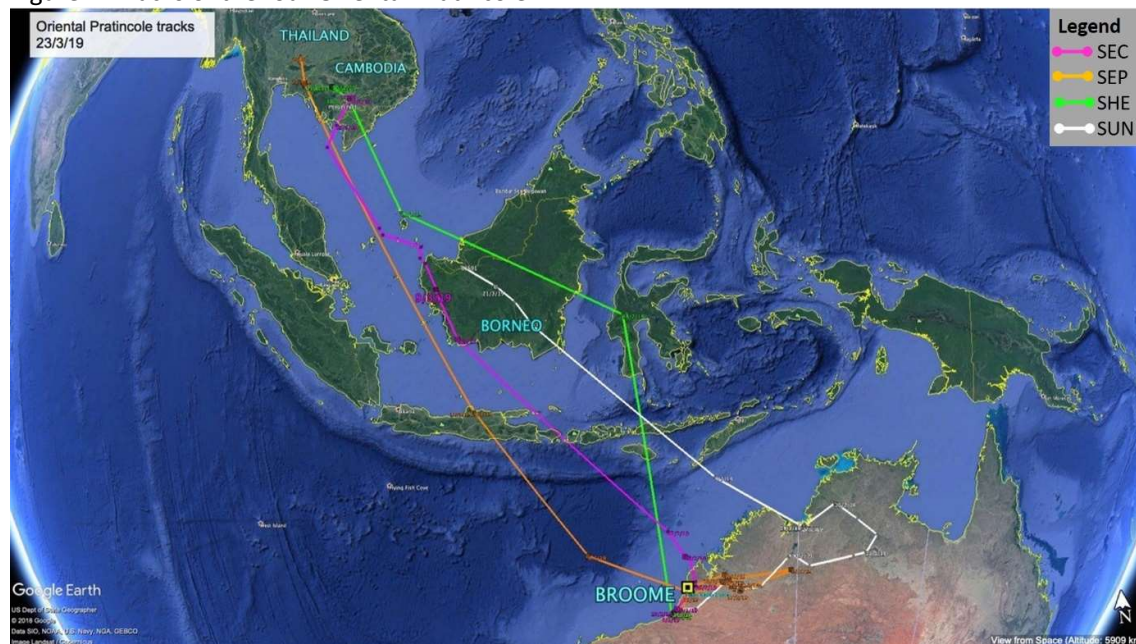
Oriental Pratincole – Making more progress (by Grace Maglio)

Three of the four birds are now in Mainland Southeast Asia, SEC and SHE in Cambodia, and SEP in Thailand. SUN is now in East Malaysia. While SHE remains in the Tonle Sap Lake floodplains, SEC, SEP and SUN are currently located in areas of intensive agricultural use.

Photo 1: Oriental Pratincole in flight (Photo by Rob Bush)



Figure 1: Tracks of the four Oriental Pratincole



Distance from release location 23 March

Engraved Leg-flag	Distance from 80 Mile Beach release location (approx.)
SUN	2,540km
SEP	4,350km
SHE	4,000km
SEC	3,840km

SUN - Between 13-23 March SUN has travelled approximately 570km and is now in the Sri Aman District of East Malaysia, 26km west of the town of Sri Aman (Malay translation – “Town of Peace”), which is situated on the Lupar River. This District consists of highly modified, agricultural land trading in Palm Oil, Rubber, Pepper and Timber.

This location is approximately 2,540km from the release site at 80 Mile Beach in North West Australia.

Figure 2 SUN, travels north west to East Malaysia

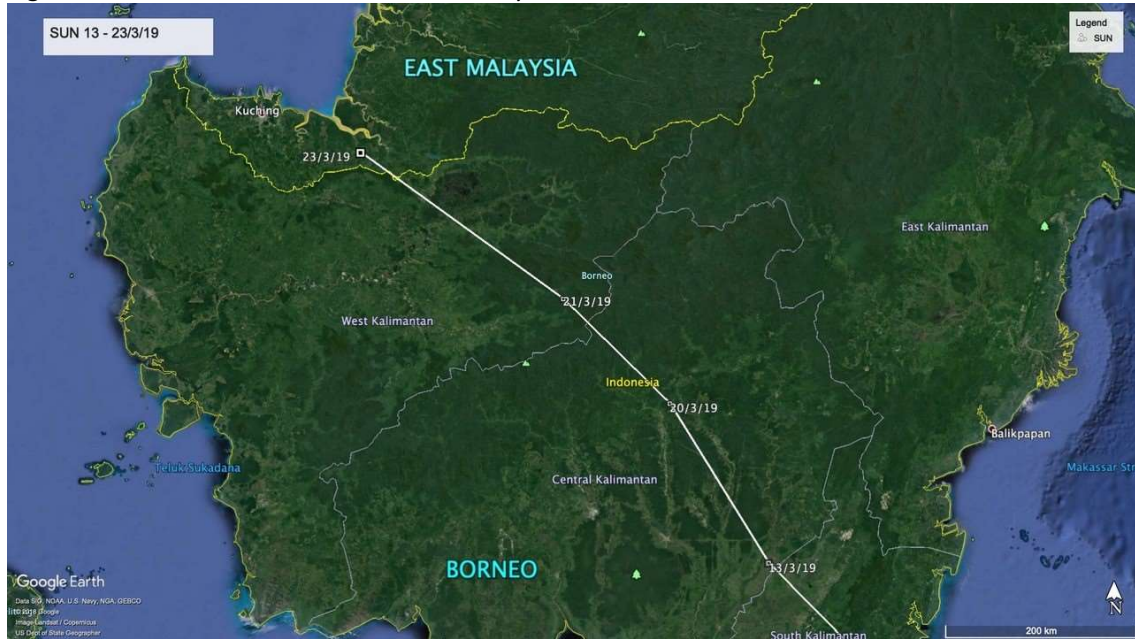
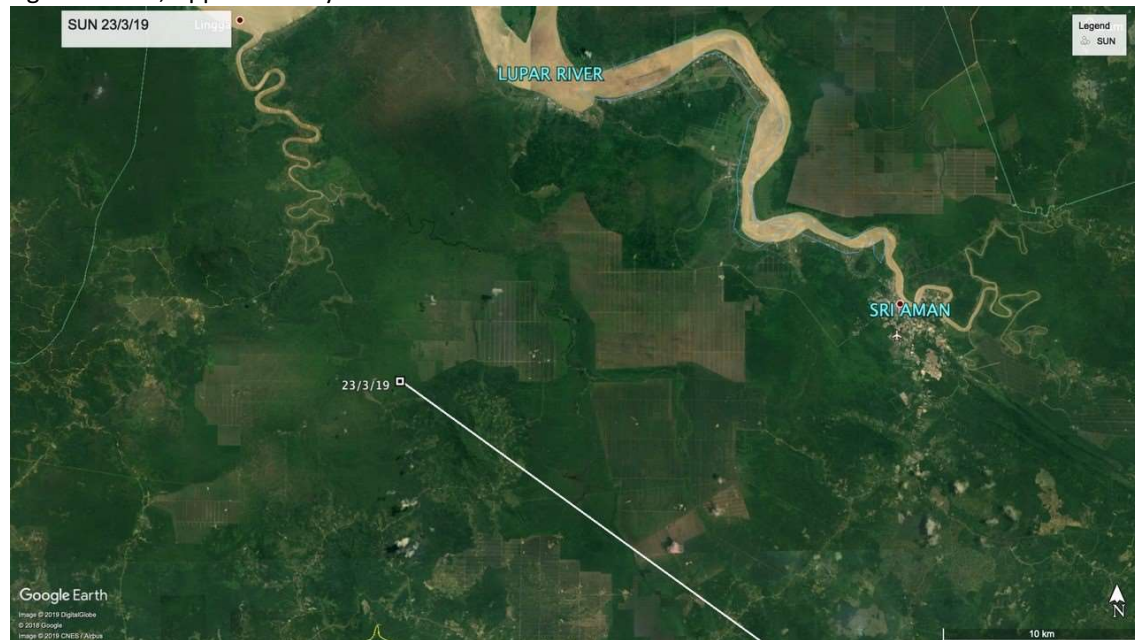


Figure 3: SUN, Approximately 26km west from the town of Sri Aman



SEP - On 12 March SEP was located in the populated Pati Regency, Central Java, Indonesia. SEP is now located 2,600km from this area, in the Khan Thale So District, Nakhon Ratchasima Province, Thailand. Again, SEP is in an area dominated by agricultural use, 3.5km west of the town of Nong Suang.

Figure 4: SEP, Central Java to Thailand

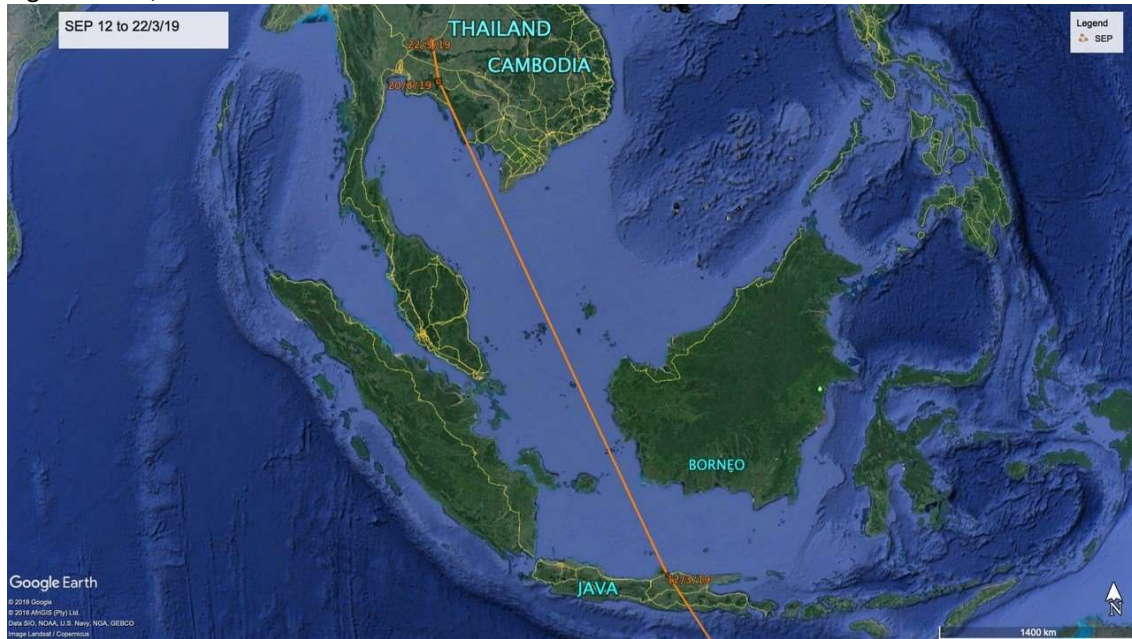


Figure 5: SEP, in agricultural land, 3.5km from Nong Suang, Kham Thale So District.



SEC – On 15 March, SEC was positioned 23km off the coast of the Vietnam-Cambodian border. From 20 March and 190km from this previous location, SEC was located 40km north east of Phnom Penh in the Prey Veng Province, Cambodia. This province is considered the “great green belt” of Cambodia, where agriculture and aquaculture dominate and less than 4% of the original native vegetation remains.

SEC is approximately 3,840km from the release site at 80 Mile Beach in North West Australia.

Figure 6: SEC, 40km north east of Phnom Penh

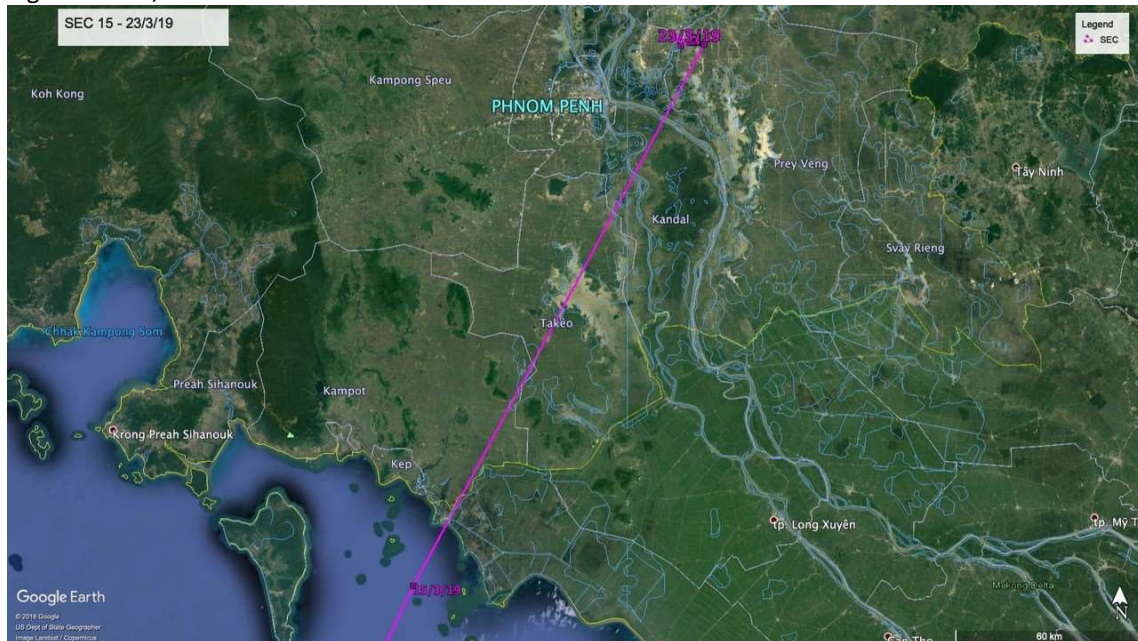
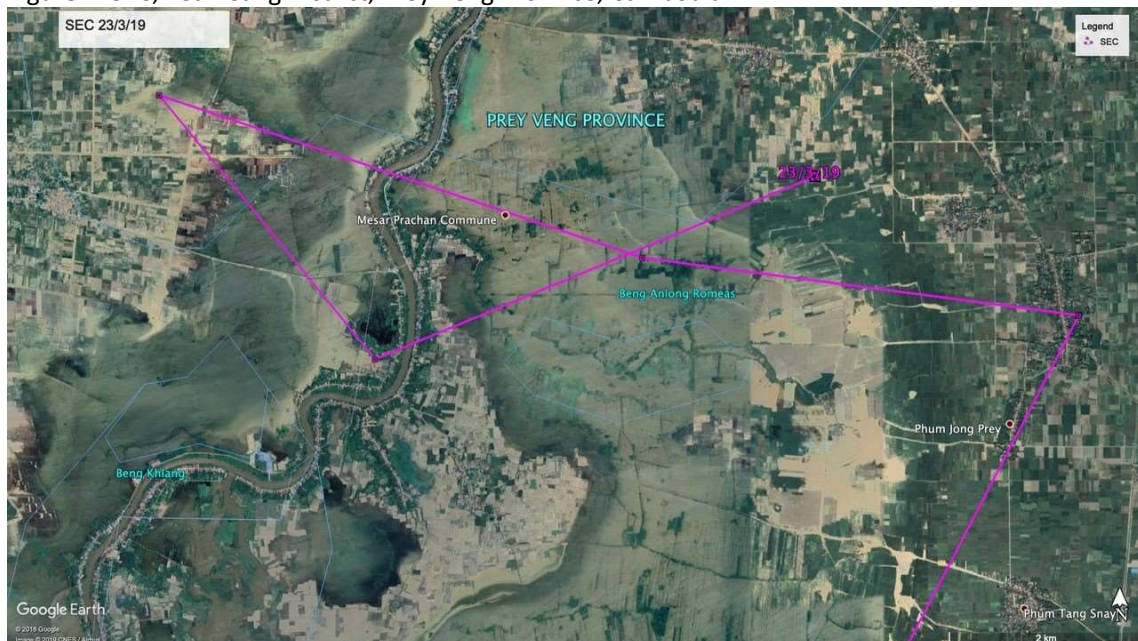
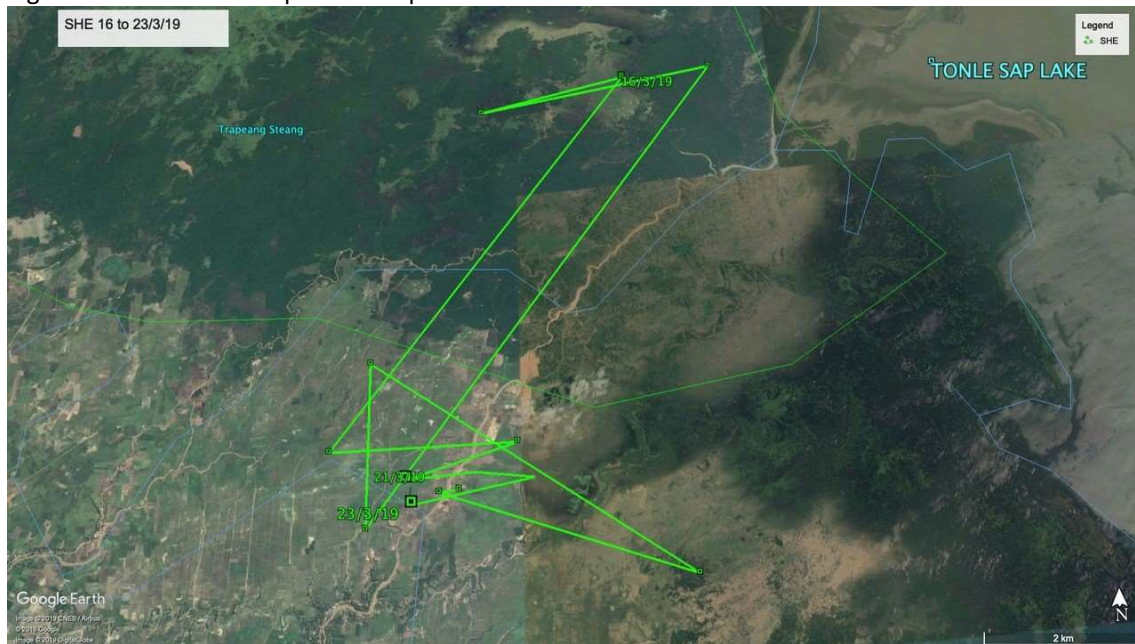


Figure 7: SEC, Pea Reang District, Prey Veng Province, Cambodia.



SHE – Four weeks in and SHE continues to inhabit the Tonle Sap Biosphere Reserve, Cambodia and seems to be utilising a relatively small area available to it.

Figure 8: SHE at Tonle Sap Lake Biosphere Reserve



Little Curlew – Holding still (by Inka Veltheim)

Little curlew LS is moving large distances in the Roebuck Plains/Roebuck Bay area and has moved about 40 km from the plains to the south of the bay. At present, it seems to be on Thangoo Station, not far from Bush Point. Little curlews LL and LU continue to move locally at Anna Plains. LY appears to have been stationary for the last week and it is possible the tag has fallen off the bird or that the individual has died.

Figure 9: Little Curlew movement over the past week



Photo 2: Little Curlew 'LS' before releasing (Photo by Olivia Gourley)



Whimbrel (by Katherine Leung) – No change in situation: KU at Roebuck Bay and LA at 80 Mile Beach.