

***Oriental Pratincole – Journey to the west*** (by Grace Maglio)

SUN, SHE and SEC are now in Cambodia with up to 160km between them. SHE and SUN are both in the Tonle Sap Biosphere Reserve, with SEC remaining in the Prey Veng Province. SEP has made a big move to India.

Figure 1: Tracks of the four Oriental Pratincole

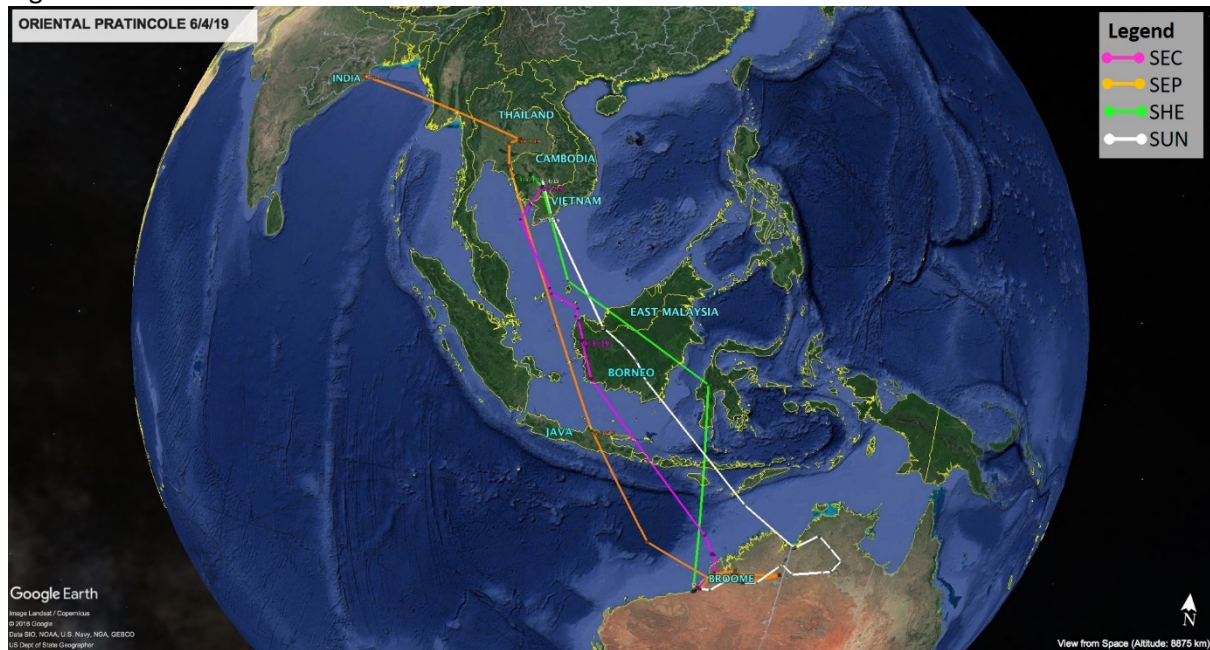


Figure 2: Oriental Pratincole, Mainland Southeast Asia locations and East india

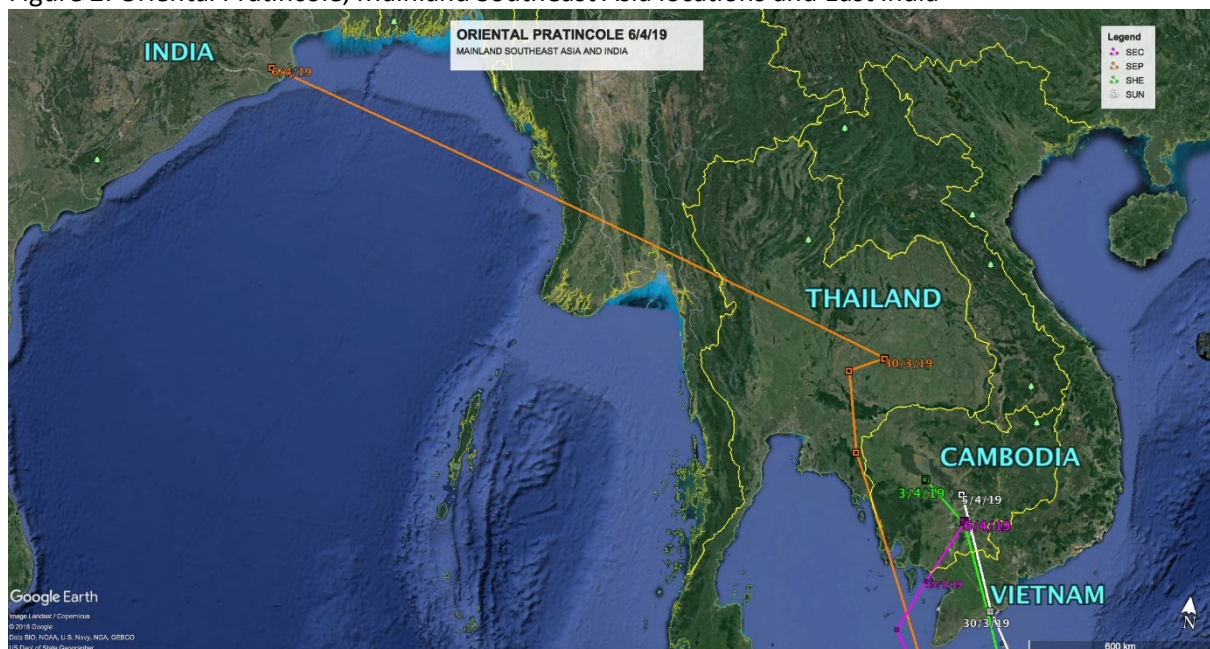




Photo 1: Oriental Pratincole released at 80 Mile Beach after transmitter deployment (by Delip K. Das)

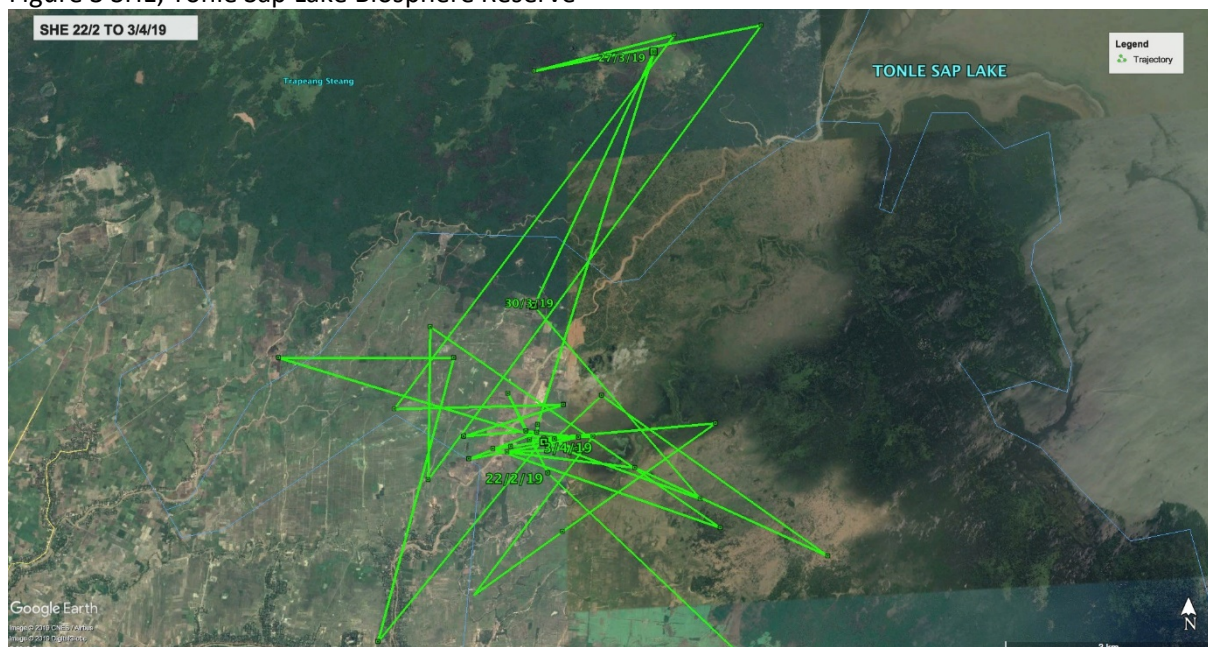


**Distance from release location 6 April**

Engraved Leg-flag	Distance from 80 Mile Beach release location (approx.)
SUN	3,930km
SEP	5,800km
SHE	4,000km
SEC	3,840km

**SHE** - To breed or not to breed - For the past six weeks SHE continues to inhabit the Tonle Sap Biosphere Reserve, Cambodia. It is difficult to judge whether SHE's movement in this area is an indication of potential breeding/nesting behaviour or normal foraging/roosting behaviour. We are left to wait and wonder for another week.

Figure 3 SHE, Tonle Sap Lake Biosphere Reserve





**SUN** - Where there's water... - On 30 March, SUN was in the Mekong River Delta region of Vietnam. Data received on 5 April indicates SUN is now located another 340km north in the southern area of the Kampong Thom Province in the Baray District of Cambodia, 90km north of Phnom Penh.

Kampong Thom Province is the second largest province in Cambodia, within the Tonle Sap Biosphere Reserve, where rice paddies and aquaculture dominate the landscape. SUN is 100km east of SHE's western Tonle Sap location of the past six weeks.

SUN is approximately 3,930km from the 80 Mile Beach release site in North-west Australia.

Figure 4: SUN, Mekong River Delta, Vietnam to Kampong Tong, Cambodia

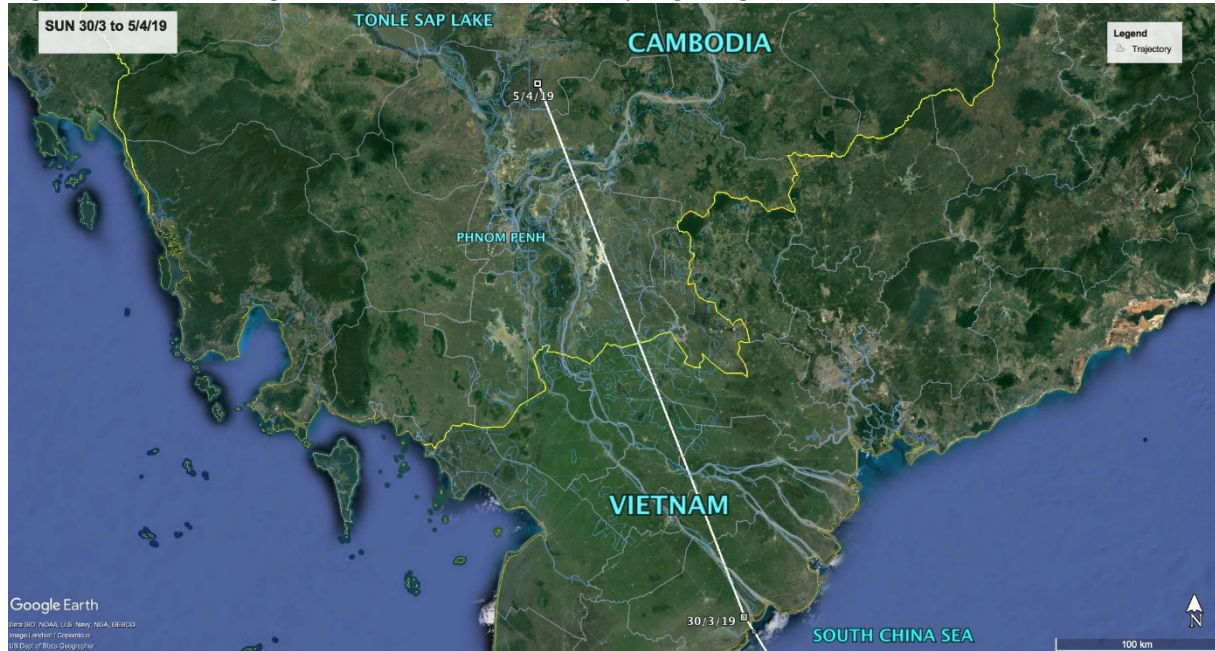
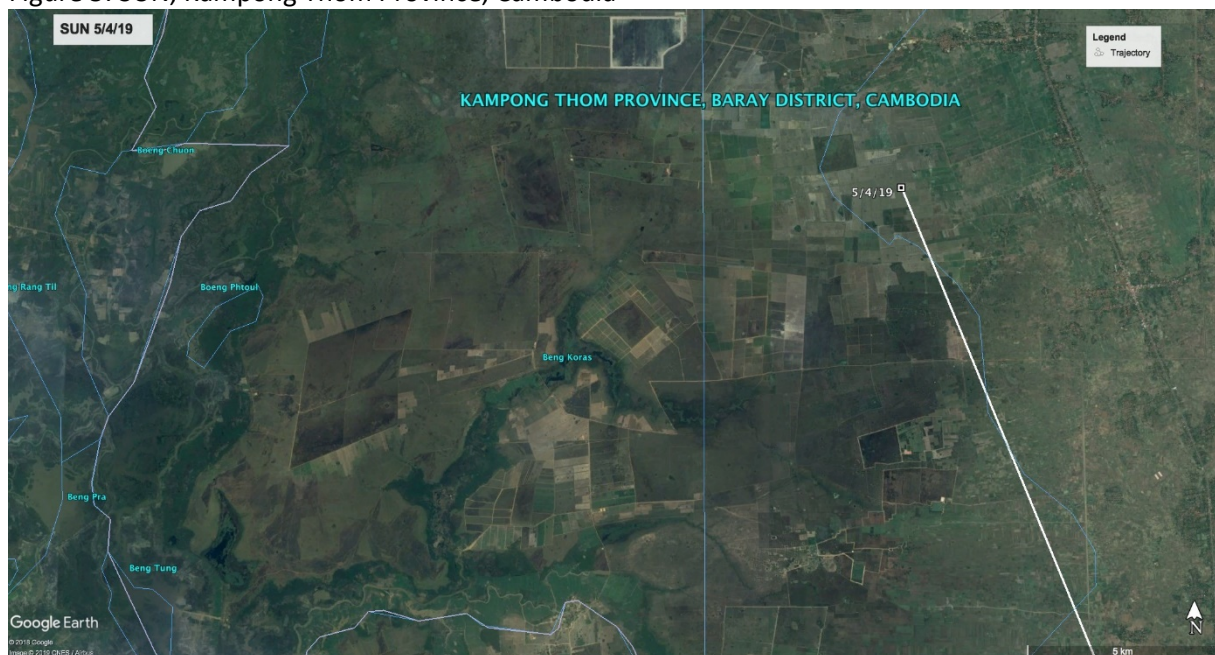


Figure 5: SUN, Kampong Thom Province, Cambodia





**SEP** - From the coastal plains of North-west Australia to the coastal plains of East India. - From 22 March, SEP was located in the Nakhon Ratchasima Province, Thailand. Around 1 April, SEP left Mainland Southeast Asia and flew towards India.

Latest data from 6 April finds SEP in the coastal plains of Odisha, a state in East India approximately 1,815km north-west of its Thailand location. Unlike the remote and isolated coastal plains of 80 Mile Beach, Kendrapara District, where SEP is currently located, consists of predominately agricultural allotments (legumes, rice and jute), with many small villages nearby. However, a similarity does exist in the frequent weather events, including cyclones, flood and drought that occur in both regions.

SEP is currently 5,800km from the 80 Mile Beach release site.

Figure 6: SEP, track from Thailand to India



Figure 7: SEP, in agricultural land of Kendrapara District. Note the many surrounding villages.





**SEC** – The good life in the ‘great green belt’ of Cambodia - SEC has now been in the Prey Veng Province, Cambodia, 40km northeast of Phnom Penh, for 17 days. It seems that the regions fertile land benefits both the wildlife and the people of the area.

Figure 8: SEC, Prey Veng Province, Cambodia



***Little Curlew – Migration kick started*** (by Inka Veltheim)

The Little Curlew migration has begun. The first bird to leave Anna Plains is LL, which was flying past Roebuck Bay just after midnight on 5 April. It flew approximately 2,000km and has landed on the island of Maluku, Indonesia on 7 April morning. This migration path is further east than migration of Little Curlews in previous years (2013 & 2015), and may be due to tropical cyclone Wallace tracking across the sea between Australia and Indonesia.

Little Curlews LS and LU remain at Anna Plains.

Figure 9: Current location of the 3 Little Curlews

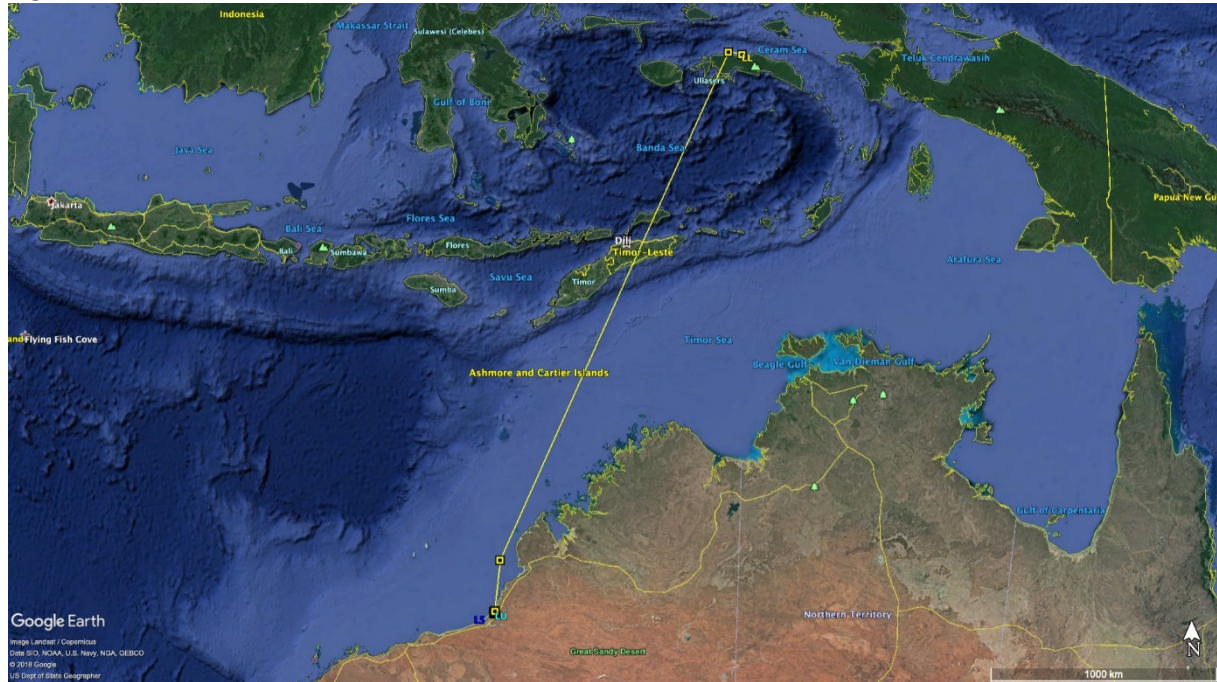


Figure 10: LL on the island of Maluku, Indonesia





***Whimbrel – Counting down*** (by Katherine Leung)

Counting down to departures of Whimbrels! In previous years, KU started its migration on 17 April 2017 and 22 April 2018, while LA began its first northward migration on 24 April 2018. Which one will be the first to depart Australia this time?

Photo 1: Whimbrel LA released at 80 Mile Beach in Feb 2017 (by Prue Wright)

