

Oriental Pratincole (by Grace Maglio)

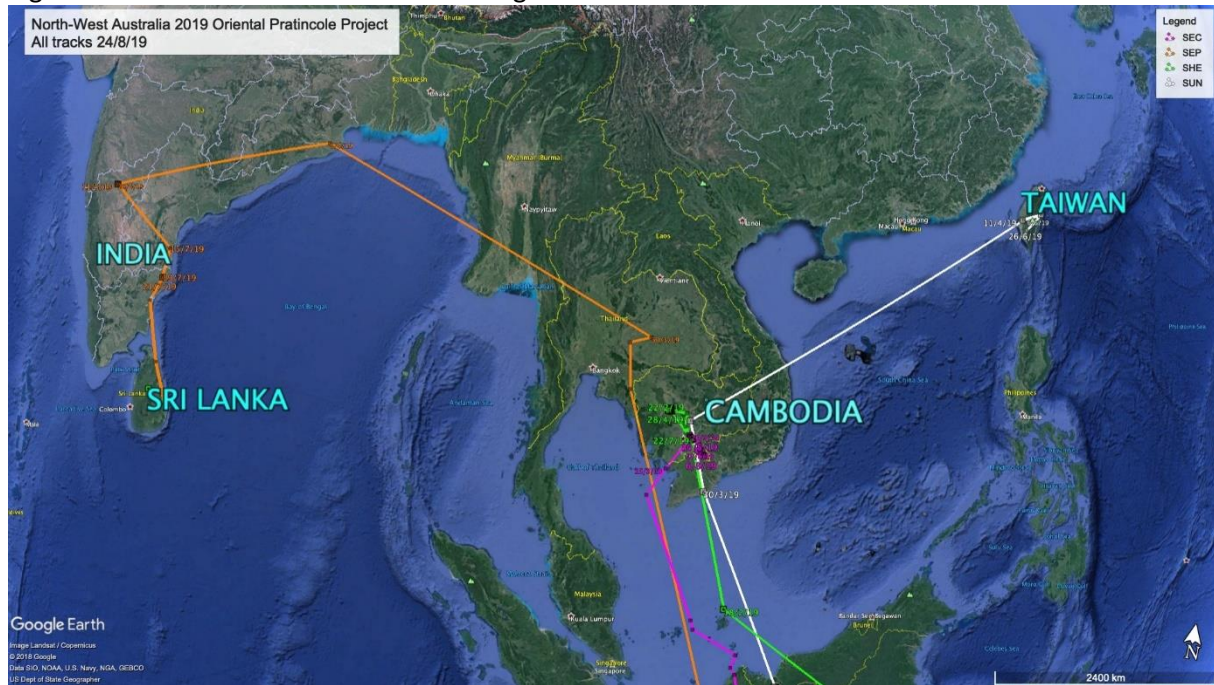
It really does look like SHE has made another breeding attempt.

SEC is still in Svey Rieng Province.

SEP has made it to Sri Lanka and...

Unfortunately, there have been no signals at all from SUN since 6 August.

Fig 1: Tracks of Oriental Pratincole – 24 Aug 2019



Migration details/facts so far - 24/8/19

Bird ID	Distance from 80 Mile Beach release location to breeding grounds (approx.)	Approximate time in breeding location (days)	Breeding Location	Distance from breeding site. 10/8/19	NOTES ON SOUTHWARDS MOVEMENTS
SUN	4800km	66 total	East Taiwan	130km south west	No new location data since 6/8/19
SEP	6350km	88 total	South-west India	1190km south east	Moving south along the East Coast of Sri Lanka
SHE	4000km	97 total	West Cambodia	170km south east	Approx. 85 days at Prey Veng Province site.
SEC	3840km	70 total	South-east Cambodia	115km south east	Approx 86 days at Svay Rieng Province

SHE (PTT 83595) – Second Breeding attempt very possible

For the last 85 days SHE has been tracked in Prey Veng Province, and the tracks are showing a centre point. To date we are unable to confirm the length of the breeding season for this part of Cambodia, which would help us confirm our suspicion of another breeding attempt. The below tracks only take into consideration data from accurate readings, if all readings are taken into account the tracks show a very definite centre point. Detailed analysis all of the data will most likely give us a much better indication of what may be occurring.

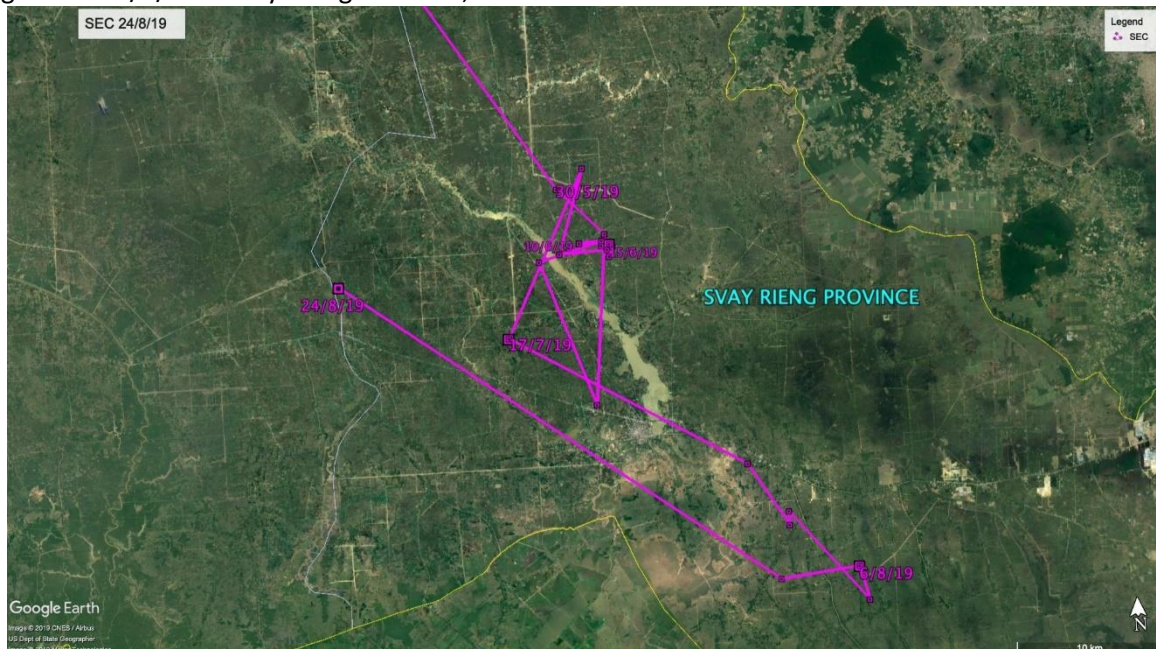
Fig 2: SHE 24/8/19 –Tracks from high accuracy location data - Prey Veng Province



SEC (PTT 83596) – Conditions must be good around the Waiko River

86 days and SEC is still in Svay Rieng Province. It seems that SEC is utilising the agricultural area around Waiko River. Although accurate data continues to be scarce, inaccurate data suggests extensive use of this area. Again, it will be interesting to see the results once a detailed analysis of tracking data has taken place.

Fig 3: SEC 24/8/19 – Svay Rieng Province, Cambodia



SUN (PTT 83591) – No Data for 2 ½ weeks

Signals have ceased and there has been no location data for SUN since 6 August. While this is not good news, there is still a chance that signals may resume. We are not quite ready for a shed/dead call yet!

Fig 4: SUN – Last reading 6/8/19, close to the first Taiwanese stop. Pin marks probable location

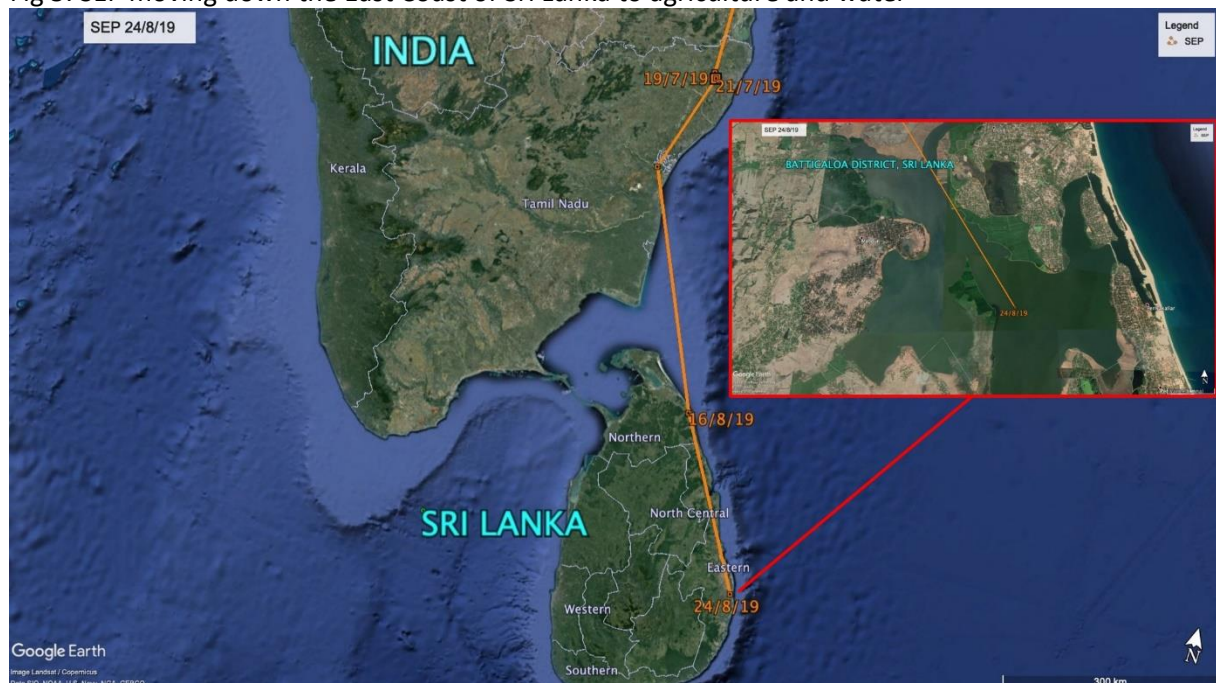


SEP (PTT 83593) – Water and agriculture; sound familiar??

Since around 16 August, SEP has been located in Sri Lanka. On 24 August SEP is shown to be in the Batticaloa District, (in the Eastern Province), approximately 1190km from its Almatti Dam breeding location.

A closer look at the area of the last location data finds water and agricultural activity, a regular theme in terms of habitat choice for the Oriental Pratincoles in this project. SEP is presumably attracted by the rice paddies of the region.

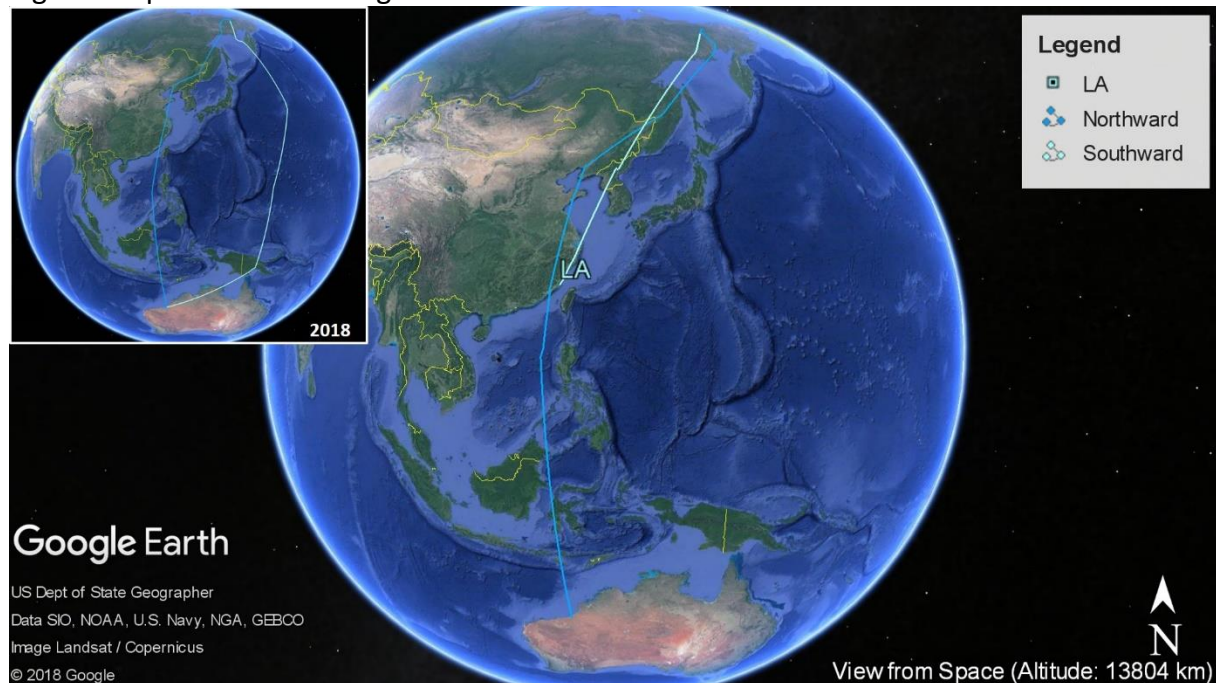
Fig 5: SEP moving down the East Coast of Sri Lanka to agriculture and water



Whimbrel – A different route (by Katherine Leung)

Born in 2015 Arctic summer, LA is currently at its fourth year of life and on its third southward migration trip. This time LA has taken a different route from season 2018. Rather than making a flight from Kamchatka pass the Pacific Ocean, it has taken a gradual step-by-step track via the China coast. It is currently having a “vacation” at Pingtan Island off the coast of Fujian Province, which is a popular holiday destination known as “the Maldives of Fujian”. The island also supports over 36 thousand hectare of coastal wetland and 128 species of birds.

Fig 6: Comparison of LA’s migration tracks 2018 & 2019



KU is now staging at the coast of Yingkou, Liaoning Province. It is expected to stay there until late Sep or early October.

Migration summary of Whimbrels (as of 31 Aug 2019):

Leg Flag (track colour)	No. of days since transmitter deployment	No. of days since departing Australia	Distance travelled (2019)
KU (yellow)	918 days	128 days	13,847 km
LA (blue)	930 days	127 days	16,006 km