

### *Oriental Pratincole* (by Grace Maglio)

**Dedicated to Dr Clive Minton, the man responsible for this amazing project!**

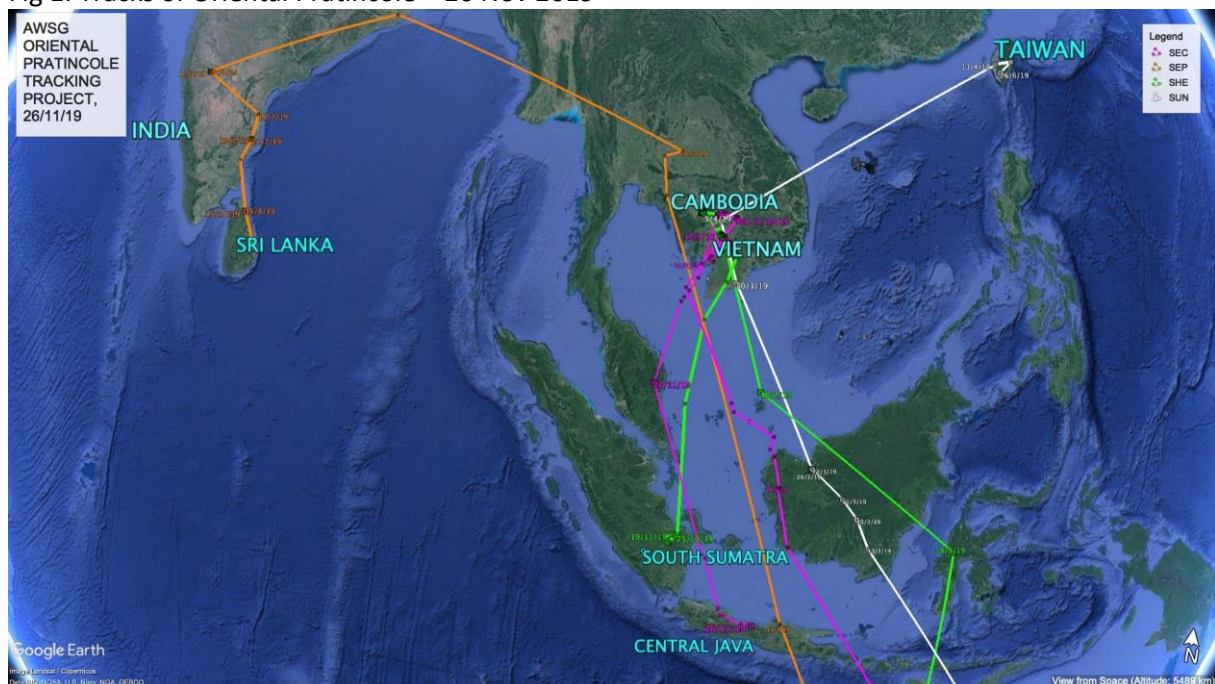
With SHE 2500 km and SEC 2000 km from the release site, it is difficult not to become excited about thoughts of their next movements.

It is thought that Oriental Pratincole spend only three months per year in Australia, arriving in December and departing once again around February. Will they return to Anna Plains Station? If not, what part of Australia will they call home for this period? So many questions that have no answers...YET.

For this report, I very cautiously share some details of SEP, (our Indian traveller), with a very exciting possible location. News that is worth sharing even if only to remind us to remain hopeful.

All going well, this project will continue to add valuable knowledge to the movements of these incredible little birds!

Fig 1: Tracks of Oriental Pratincole – 26 Nov 2019



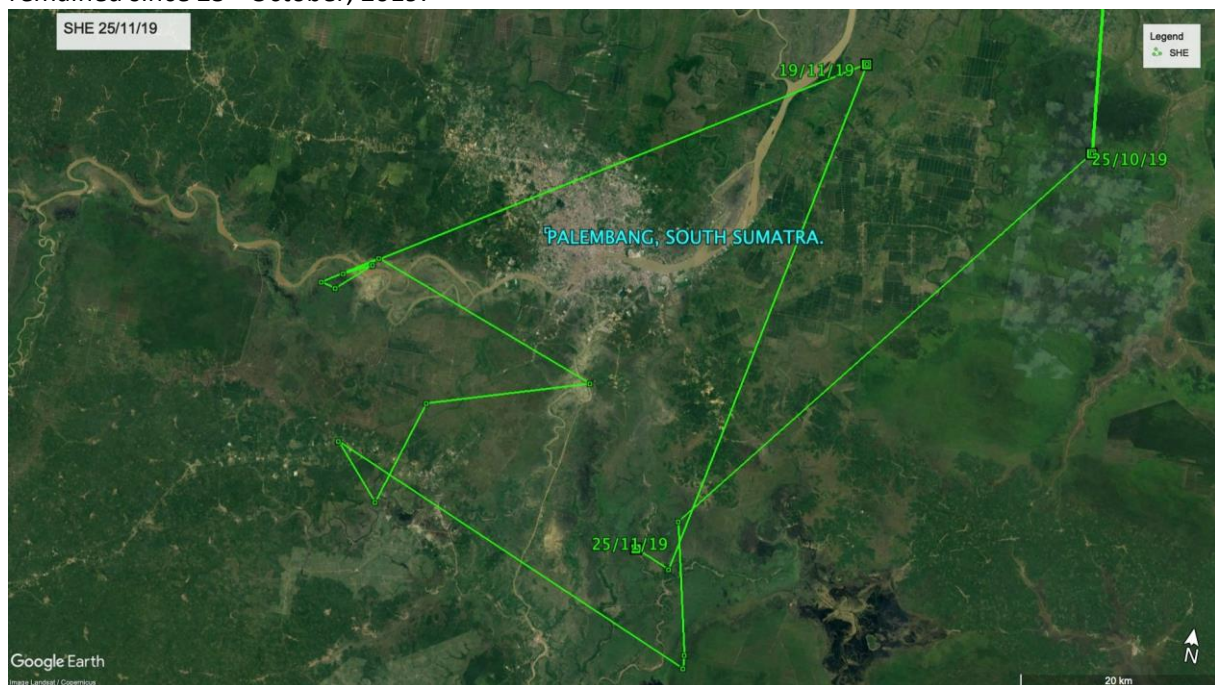
### **SHE (PTT 83595) – City living**

For just over four weeks SHE has been utilising, the highly modified agricultural land around Palembang, the heavily populated capital of South Sumatra.

Fig 2: SHE 25/11/19 Flight path of SHE from Cambodia to its South Sumatra stopover during southward migration.



Fig 3: SHE 25/11/19 – SHE’s current location in the vicinity of Palembang, South Sumatra where it has remained since 25<sup>th</sup> October, 2019.



#### SEC (PTT 83596) – Leading the ‘race’ to Australia.

After five weeks in the Tonle Sap Biosphere Reserve, SEC seems to have left this area and has travelled approximately 2300 km south. Accurate location data shows its current location within the heavily populated boundary of Pekalongan City, Central Java, Indonesia, but it is likely SEC is actually situated in a more sparsely populated agricultural area approximately 100 km east of this location.

Fig 4: SEC 26/11/19 – SEC’s flight path to where it currently resides in Central Java, Indonesia.



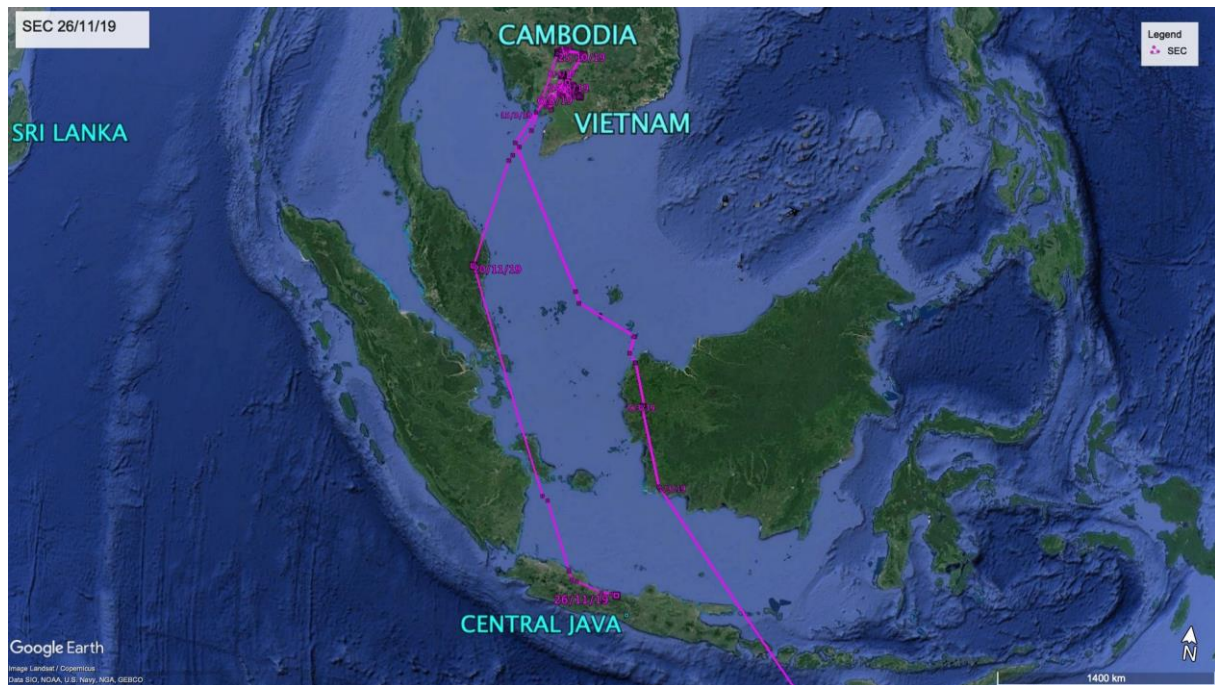


Fig 5: SEC 26/11/19 A close-up view of SEC's current location in Pekalongan, Central Java, Indonesia.

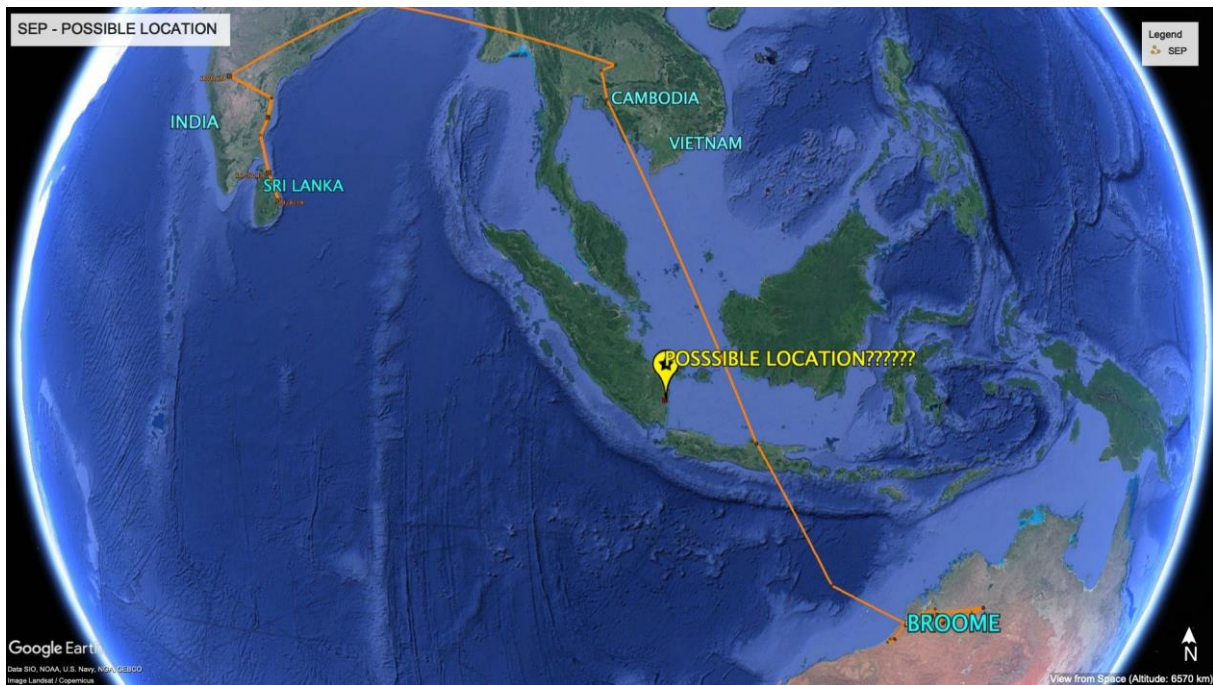


### SEP (PTT 83593) – With a Little Bit of Luck

With the last accurate data received being on the 15th October, showing SEP to be in Vattappala in the Mullaitivu District, Sri Lanka, it was with cautious relief to receive limited data, although inaccurate, showing SEP may have travelled to South Sumatra. Now we wait and hope for more information.

Fig. 6: Possible location of SEP in South Sumatra around mid-November





### SUN (PTT 83591) – Just for the record

Still no signals at all from SUN since the 1st September. In the very slim hope that we may receive some data, this map will remain on this final page for a little longer.

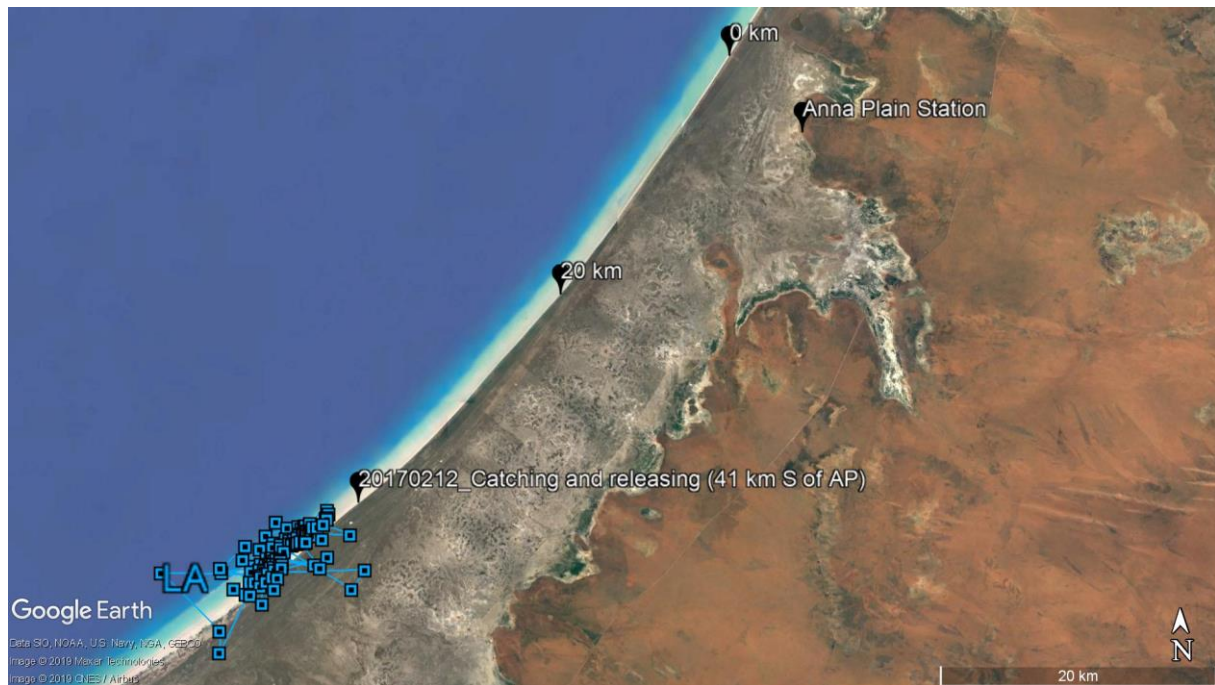
Fig 7: SUN – Still no accurate readings. Pinned area marks probable location from last reading (low accuracy) 1/9/19.



### Whimbrel – Until next spring (by Katherine Leung)

Whimbrel LA has now back to 40-50km south of Anna Plains Station entrance on Eighty Mile Beach. As per the previous two non-breeding seasons, it is expected that LA will be hanging around this area until next migration season in spring, unless there is any extreme weather event. Until then the Whimbrel update will still be simplified as the table below with summary information.

Fig 8: LA's local movement since 11 October at Eighty Mile Beach



Migration summary of Whimbrel LA (as of 28 Nov 2019):

No. of days since transmitter deployment	No. of days since arrive back in Australia (2019)	Count-down to next migration season (estimated)
1,019 days	48 days	149 days